

MK-312BT

User Guide



Contents

User Agreement	3
IMPORTANT SAFETY INFORMATION Read Before Using	4
1 • Getting Started	5
2 • Introduction to E-Stim	6
3 • Initial Setup	7
4 • Safety	8
5 • Connections	9
6 • Controls	11
7 • Front Panel Diagram	12
8 • LCD Display	13
9 • Modes	15
10 • Tips for Rewarding E-Stim	18
11 • AC / Battery Operation	19
12 • Caring For Your MK-312BT	20
13 • Advanced Topics: Menus	21
14 • Advanced Adjustments Menu	25
15 • TriPhase Stimulation	27
16 • Audio Modes	29
17 • Troubleshooting	30
USA Limited Warranty	31
Authorized Sales and Support	32

User Agreement

Use Agreement

Use of the enclosed product(s) indicates full acceptance by the Purchaser of this Use Agreement. Purchaser acknowledges erotic electrostimulation (also from this point on in this document referred to as “e-stim”) has associated risks and agrees to be bound by all terms and conditions of this Use Agreement.

Limitation of Liability

Purchaser assumes all risk and liability for loss, damage, or injury to Purchaser, others, and property arising out of the use, misuse, or inability to use Electrified Experiences products (the “Product”). Electrified Experiences and their related companies, members, agents, employees, affiliates, and consultants (collectively the “Manufacturer”) will in no event be liable to Purchaser, or any persons or entity claiming through Purchaser, for any direct, indirect, consequential, incidental, or other damages under any theory of law for any use, misuse, or inability to use the Product even if the Manufacturer was aware of the possibility of such damages.

Indemnity

Purchaser hereby releases and agrees to indemnify and hold harmless, the Manufacturer from any and all claims, demands, causes of actions, liabilities, damages, costs, and expenses, including reasonable attorneys’ fees, arising from the use, misuse, or inability to use the Product.

Binding Arbitration

Purchaser agrees that any claim or dispute arising out of use, misuse, or inability to use the Product shall be submitted to an independent and objective arbitrator for binding arbitration. The Purchaser agrees binding arbitration shall be the sole remedy for any claim and they expressly waive their right to file a lawsuit in any civil court seeking remedies from the Manufacturer except to enforce a legally binding arbitration decision.

Non-Acceptance

The Purchaser may return the unopened product for a full refund without penalty if they do not accept this Agreement. Once this product is opened and used, this is non-returnable.

IMPORTANT SAFETY INFORMATION

Read Before Using

Use the MK-312BT at your own risk: understanding the MK-312BT may be harmful if misused. Given the nature of electrostimulation, Electrified Experiences cannot be liable for any damage or harm of any kind caused by or related to Electrified Experiences products. Treat the MK-312BT like a sharp knife or power tool. It must be used properly or injury may result.

The MK-312BT, like any electrostimulation device, can cause serious harm if misused. Always make all connections with the power OFF. Current passed through the heart, neck or head can be fatal. Never, under any circumstances, pass current through the neck or head. If you have any doubt about the safe use of electrostimulation, consult a physician before using.

Pre-existing Conditions. E-stim devices are NOT for use by or on anyone with implanted electronic devices – pacemakers, defibrillators, drug pumps, etc. – heart problems, heart disease, epilepsy, brain disorders, nervous system disorders, a history of strokes or seizures, serious skin problems or similar medical conditions. Not for use by pregnant women, women who might be pregnant, or anyone under the age of 18. Current passed through the heart, neck or head can be fatal.

Keep away from children.

The MK-312BT is intended for use only by healthy, consenting adults familiar with safe electrostimulation and proper operation of the MK-312BT. If excessive soreness, skin irritation or other conditions develop, discontinue use. Use care in operating the device until you're familiar with it. Sudden stimulation at high levels may cause muscle injuries, a person to fall, or other harm.

Use the MK-312BT only with attachments and accessories designed for safe electrostimulation. Do not attach it to body piercings or similarly small electrodes. Do not connect the channels together except as shown in the [Advanced Topics](#) section of this guide. Do not attempt to open, repair or modify the MK-312BT. Use only the supplied AC adapter.

Make sure you connect any external equipment to the proper jacks. Electro-stimulation uses electrical signals that can damage sensitive audio and computer equipment. If connections are made to the wrong jacks, the connected equipment may be damaged. Always make all connections with the power turned OFF.

Do not use the MK-312BT in conjunction with “violet wand” type devices. The extremely high voltages produced by these units can damage the MK-312BT and many other electronic devices.

1 • Getting Started

Welcome to the fold. The MK-312BT is the most advanced unit of its kind. It offers many unique sensations from its smooth and dynamic, high-frequency digital pulses.

Before you go any further, please make sure you have read the Important Safety Information in the previous section.

The MK-312BT is like a high-end digital camera. It can automatically make most of the adjustments for you. However, like a professional camera, it also offers a host of optional features for the more experienced user.

The Advanced Topics sections are designed for experienced as well as more adventurous users with features including TriPhase and Stereo Audio Stimulation.

No matter how you use it, the MK-312BT offers best-in-class performance when compared to any other e-stim power unit.

While it's critical to be aware of the risks and take reasonable precautions, e-stim is a fairly safe and exciting practice.

It can be fun to learn from others while experimenting, exploring and expressing yourself with e-stim.

Welcome to the World of Erotic E-Stim!

2 • Introduction to E-Stim

E-stim has changed the lives of so many for the better. Partners have discovered it to be the perfect enhancement to spice up their love life. Individuals find it takes solo sessions to a whole new level. Those with limited mobility can enjoy the experience more fully and “hands free”.

Electrostimulation, in one form or another, has been around for over 100 years.

A common application is in physical therapy and pain management by the medical community. The MK-312BT produces a similar output to medical TENS (Transcutaneous Electrical Nerve Stimulation) and EMS (Electro Muscle Stimulation) units. However, the MK-312BT is designed to provide pleasurable sensations in place of dull, numbing or tingling ones.

The MK-312BT creates special waveforms made up of high frequency pulses. This current stimulates the nerves and muscles in unique ways and flows between two pairs of contacts called **electrodes** connected to each output channel of the MK-312BT.

Some e-stim accessories have a pair of contacts built in. We call these **bipolar electrodes**. Other electrodes only have a single connection. These are called **monopolar electrodes** and must be used along with another electrode to create a closed loop for current to flow.

This introduction scratches the surface of what can be considered the art and science of electrodes. There's a wealth of information online regarding electrode design, placement, and philosophy that are outside the scope of this manual. However, careful study of it will only make your experience with the MK-312BT that much more rewarding.

3 • Initial Setup

Using the MK-312BT for the first time is very simple. Just follow these easy steps:

1. Connect the supplied AC Adapter to the VDC input jack when the battery needs charging. The MK-312BT may be used while charging.
2. Make sure the unit is **OFF** before connecting the desired accessories to the output jacks (see: [5 • Connections](#)). Both plugs of each leadwire must be connected to an electrode surface to form a complete circuit for current to flow. It's advisable for e-stim beginners to keep all connections below the waist and follow the directions supplied with your accessories.
3. Turn both Output Level controls all the way down (to the left).
4. Pull the power switch toggle handle OUT while flipping UP to turn the unit ON. This safety switch prevents accidental powering of the unit.
5. Use the grey **NEXT** [→] and **PREVIOUS** [←] buttons to select the desired mode (see [9 • Modes](#)). The name of each mode is displayed on the LCD.
6. Set the Level and MultiAdjust controls to produce the desired stimulation. (See [6 • Controls](#)).

4 • Safety

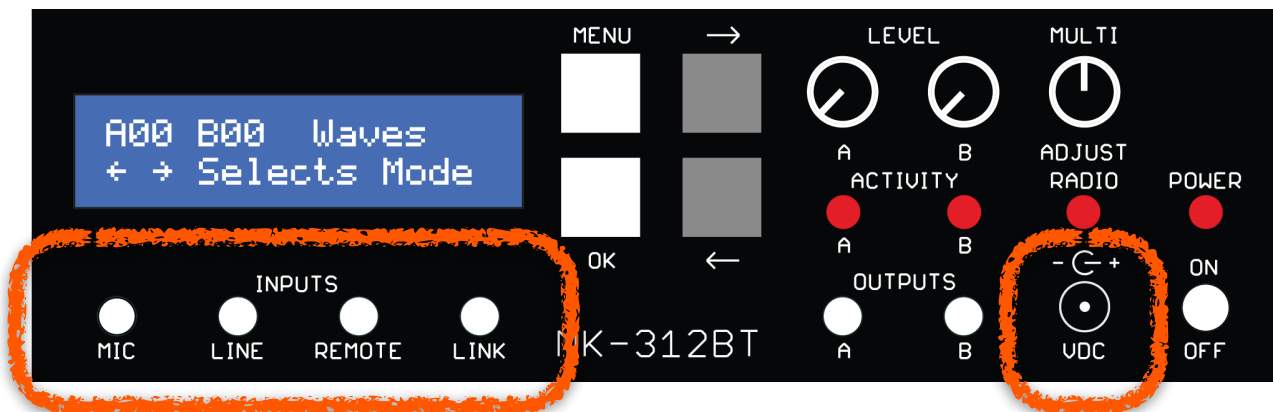
Be sure you have read the Important Safety Information printed at the front of this Guide. Like many things in life, e-stim is not without risks. It must be performed properly and there are certain people who should not use ANY e-stim devices including the MK-312BT — this includes anyone with a heart condition.

In general, e-stim should only be performed below the waist. It is extremely important to avoid passing current through the heart, neck, or head areas. You need only grab a bare metal connector or electrode when the unit is on and wired to at least one other point on the body. The current will travel from below your waist, through the heart area and to your hand. Always turn the MK-312BT OFF when making, changing, or removing connections.

The MK-312BT should only be used with accessories and electrodes designed for safe e-stim. Never make connections to body jewelry or similarly small electrodes. Do not use electrodes made of toxic metals such as lead solder. If you intend to use the MK-312BT with others, you should experiment with it on yourself before connecting it to someone else. Also, avoid splitting a single channel to connect more than one person at a time.

5 • Connections

The MK-312BT has seven (7) connection jacks along the bottom side of the front panel as shown below. Most jacks accept the same style 3.5mm plug so it's important to use care when making connections.



INPUTS

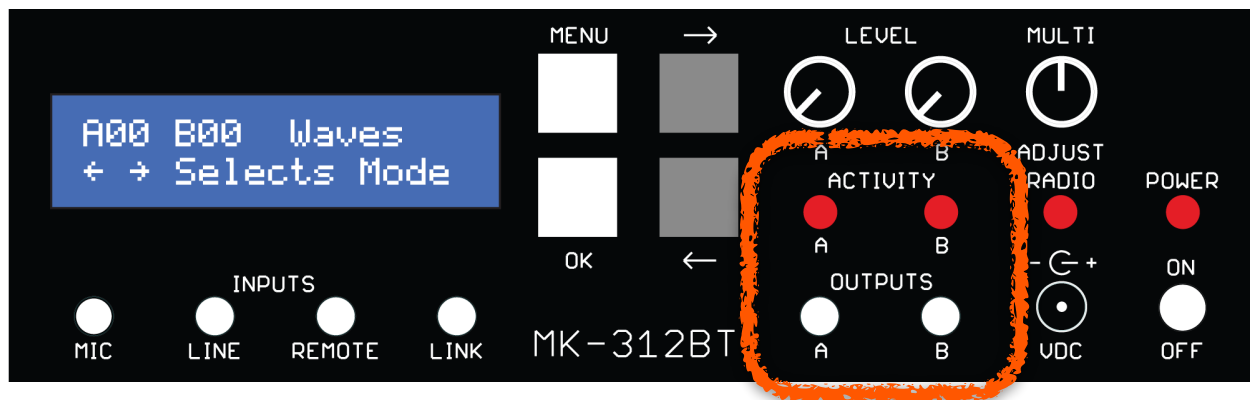
MIC – Connects to a PC-compatible microphone for sound-based stim. See: [16 • Advanced Topics: Audio](#) for more information.

LINE - Connects to the headphone jack of a computer, phone or music player. You can connect most any audio device with a headphone jack to this input. Disconnect audio devices when you are not using them. Audio devices should only be used in the audio modes.

REMOTE - Connects to an optional wired remote control.

LINK - This is a proprietary digital interface. It allows an MK-312BT to connect to another MK-312BT or ET-312B to be used in a master/slave configuration. The slave unit will mirror what the master unit is doing, providing four channels of stimulation controlled from one unit. Linking two units requires a [Link Cable](#), available from ErosTek. A standard stereo audio cable is not wired correctly and will not work. See: [13 • Advanced Topics: Menus](#). It also allows use of optional [ErosLink](#) software to create and install additional User modes.

VDC Input - Connects to the supplied AC Adapter to charge the battery. Use only the 15 VDC adapter supplied with your unit or one approved by ErosTek.



OUTPUTS

OUTPUTS A and B - Connect lead wires to electrodes. Each output operates independently. Always make connections with the power turned **OFF**.

IMPORTANT! — Make certain you never connect an audio device, computer, or microphone, to the A or B Output jacks! While this will not harm the MK-312BT, it can easily damage the external equipment. Always double check your connections and ensure the front knobs are turned all the way down before starting the unit.

INDICATORS

ACTIVITY LEDs – A red LED for each channel is located under each LEVEL control. These provide an approximate indication of what each output is doing. This is especially useful if you're using the MK-312BT on someone else or playing an external audio source in one of the Audio modes.

6 • Controls

The MK-312BT offers a wide variety of e-stim options yet is very easy to use. There are 18 factory e-stim patterns or routines available. These are called “Modes.” You can further tailor each mode to your tastes.

For normal operation, simply make the desired connections, make sure that output levels for both channels, A and B, are at their minimum, turn the MK-312BT **ON**, choose a mode, and gradually increase the output level. The **MultiAdjust** control can be used to easily fine-tune the sensations.

ON/OFF Power Switch – The power switch is located on the bottom right corner next to the VDC input jack. Make your connections and turn the level controls fully down before turning the MK-312BT on. Pull the power switch toggle handle OUT while flipping UP to turn the unit ON. This safety switch prevents accidental powering of the unit. Don’t forget and leave the MK-312BT ON without it being powered by its AC adapter. Allowing the battery to go dead can cause permanent damage to the battery and reduce the operating time. Replacement Battery Modules are available from ErosTek.

LEVEL A and B – These adjust the output intensity for each channel. Fully counterclockwise (to the left) is all the way down. The intensity level is shown on the LCD from 00 to 99. It is normal to feel the output sometimes increase in small “steps.”

Multi Adjust (MA) - This single control adjusts the optimum parameters for most modes. After you’ve selected a mode, and set the level controls, use the **MA** control to fine tune the output for the desired effect or to provide added variety. In some modes, the **MA** control may take a few moments to respond.

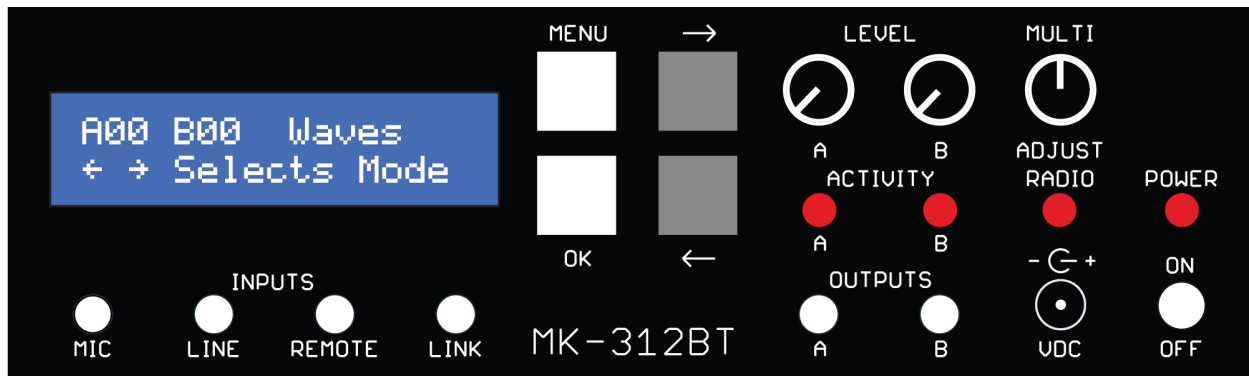
NEXT [→] In normal operation, this button advances to the next mode. See: [9 • Modes](#). When the last mode is reached, the menu wraps around to the first mode. It is also used to make adjustments in the **Advanced Menus**. See: [13 • Menus](#)

PREVIOUS [←] This has the opposite effect of the **NEXT** button. It selects the previous mode or setting and also wraps around as above. It provides a faster way to access the upper modes.

[MENU] - This optional button is used to enter and exit the Advanced Menus. This button is not required for normal operation. See: [13 • Menus](#)

[OK] - This optional button is used to confirm Advanced Menu choices. This button is not required for normal automatic operation. See: [13 • Menus](#)

7 • Front Panel Diagram



Backlit LCD - Displays current mode and adjustments

[MENU] Button - Optional advanced settings

NEXT [→] Button - Selects next mode or setting

[OK] Button - Confirms menu choice

PREVIOUS [←] Button - Selects previous mode or setting

Level A and B - Adjusts intensity of Outputs A and B

Multi Adjust - Adjusts stimulation sensations

Activity A and B LEDs - Output indicators showing relative output strength

Radio LED - Not currently used

Power LED - Lights up when power is ON

Power Switch - Pull OUT and flip UP to turn ON and DOWN to turn OFF.

8 • LCD Display

The MK-312BT has a lighted LCD for ease of use.

When first turned **ON**, it will display a progressive bar as the various self tests are run.



```
Initializing...  
XXXXXXXXXX
```

Afterwards, the following will be displayed for a few seconds, followed by the battery level standby screen:



```
          MK-312BT  
SelfTest OK T002
```



```
Battery: 69%  
Press Any Key...
```

69% is the approximate battery charge level from 0 to 99%. Press any of the white or gray square buttons to begin normal operation.

The following will be displayed:



```
A00 B00  Waves  
Ramp:  xx  <=>=Mode
```

Ramp: xx will display for a few seconds as the output gradually increases to avoid any sudden surprises if you forgot and started with the level controls turned up.

This ramp function automatically engages whenever you select a new mode as some modes may feel more intense than others. The number “**xx**” displayed after ramp shows you the ramp level from 00 to 99%.

After the ramp is complete, the MK-312BT will display something like this:



```
A00 B00 Waves
← → Selects Mode
```

The “**A00 B00**” represent the setting of the Level controls from 00 to 99%. This allows precise adjustment of the controls and makes the MK-312BT easier to use in low-light conditions. “**Waves**” indicates the current mode.

Pressing the **PREVIOUS** [←] or **NEXT** [→] buttons will change the current mode. The lower line is used to guide the user in operating the MK-312BT.

9 • Modes

The MK-312BT includes 18 factory-loaded modes or stimulation routines. They are easily selected with the **NEXT** [→] and **PREVIOUS** [←] buttons and are displayed on the LCD. Feel free to experiment. You will learn more by feeling each one than what a description can provide. It's a good idea to turn the output levels down slightly before changing modes until you become more familiar with what each one does.

Waves - This mode constantly adjusts several parameters differently for each channel. This results in creative interplay between the channels so Waves is best enjoyed with both channels connected to different areas on the body.

MultiAdjust (MA) changes the speed from very gradual to brisk.

Stroke - This mode provides a unique “push/pull” effect with Channel A having a deeper or longer stroke. The MA control adjusts the stroke rate. A common hook up is to connect Channel A “internally” and channel B externally for coordinated “thrusting” and “stroking.” You may have to use different level settings with **Stroke**, so use care when switching between **Stroke** and other modes.

Climb - This mode increases the frequency in three different “blocks” at different rates. The **MA** control adjusts the overall speed.

Combo - This mode combines several effects. The level and frequency subtly change and the **MA** control sets the on/off rate or allows continuous stimulation with it all the way up.

Intense - This mode supplies continuous stimulation on Channel A and gated stimulation on Channel B. The **MA** control adjusts the pulse frequency over a wide range and changes the “feel.” Some find this mode creates “urgency” rapidly bringing the user close to or over the edge.

Rhythm - This mode toggles the outputs on and off at a rate ranging from slow to very fast (set by the **MA** control). At the same time, the output is grouped into “blocks” that get gradually stronger. Use care with setting the level as this mode slowly grows.

Audio Modes

For all the audio modes, an audio source must be connected to the Audio input jack, or a PC-compatible microphone should be connected to the Mic jack. When adjusting the audio modes, first turn up **MA** control until the Channel Indicator LEDs are flashing fairly brightly and then turn up the output **Level** controls, otherwise you may get an unpleasant surprise if the audio signal suddenly gets louder.

The **MA** control – along with the volume control on your audio source – should be adjusted so the ACTIVITY LEDs flicker between dim to bright. If the audio volume or **MA** are set too high, the desirable effects are lost. If they are set too low, the stimulation will be weak.

It's best to set the volume level on your audio source to maximum with **MA** control set to the midpoint (12 o'clock) position, making adjustments to each as desired.

- **Audio 1** - This mode is optimized for use with the Mic input. It picks up sounds from the microphone and produces synchronized e-stim for both channels. Audio 1 is ideal for use with Split.
- **Audio 2** - This is the stereo version of **Audio 1** and works best with the Audio input. The left and right audio signals are processed independently for Channel A and Channel B. This mode is ideal for use with any stereo music source. Pop, dance and other music with a defined beat tends to work best. Orchestral or other music with soft passages may interrupt the stimulation.
- **Audio 3** - This mode is like Audio 2 but optimized for use with computer generated wave files — (see 16 • Audio). It also provides a unique effect on music and speech. Adjust **MA** control carefully for the best effect.
- **Audio 3** is ideal for **TriPhase**. This mode should not be used above the waist with a common connection between both outputs via the TriPhase Adapter Cable or any other means.

Split - This mode splits the channels so you can run a different mode on each. From the factory, Channel A is set to **Stroke** and Channel B is set to **Waves**. See [13 • Menus](#) for information on how to choose different selections for **Split**.

Random1 - This mode randomly selects from the first 6 modes and runs each for a random length with MA value set to a random value. This provides an extremely wide variety of stimulation. **MA control has no effect.**

Random2 - This mixes several random effects and changes them at various intervals. It's never the same mode twice! **MA control has no effect.**

Toggle - This mode simply alternates a constant output back and forth between the two channels. **MA** control adjusts the rate. This produces a similar effect to other e-stim devices and many TENS units.

Orgasm - This mode starts with a highly pleasurable synchronized ramp and very slowly builds in urgency until it reaches a frantic pace and then resets and does it again. **MA** adjusts the pulse frequency.

Torment - This mode was designed for BDSM more than pleasure. It delivers brief random stimulation at random times and varying intensities. **MA** control adjusts the pulse frequency. You may want to set the output levels higher than for other modes.

TriPhase Modes

The MK-312BT includes TriPhase modes which are able to generate 3 different waveforms using a custom [TriPhase Adapter Cable](#).

See: [15 • Triphase Stimulation](#) for more details.

- **Phase 1** – The **MA** control adjusts the speed of the **TriPhase** effect.
- **Phase 2** – Randomizes the effect while each channel varies in intensity for added variety. **MA** control adjusts the speed of the effect.
- **Phase 3** - Creates 3 unique currents from only 2 channels. The **MA** control adjusts the speed of the **TriPhase** effect.

10 • Tips for Rewarding E-Stim

If you find yourself turning the Level controls all the way up.

See [14 • Advanced Adjustments](#) on how to increase the Power Level.

Most types of electrodes must be thoroughly moist to work properly — except for conductive gel adhesive pads. **Electrode gel and water-based lubes are recommended.** Some conductive rubber accessories may limit the intensity due to their design and become less conductive with repeated use.

Electrodes made from solid, polished, body-safe metals — namely aluminum and stainless steel — provide the best conductivity even with repeated use.

Current must always flow between two contacts. Smaller contacts usually feel more intense compared to larger ones. If the contacts used on a given channel are much different in size, most of the sensation will usually be concentrated at the smaller contact. Keep in mind that electrodes used near muscles may cause powerful muscle contractions at higher settings. Increase levels gradually and use caution if using the MK-312BT on someone else. Consider what effects muscle contraction might have. For example, it's not a good idea to use electrodes on the legs of a standing person. The stimulation could make them fall.

The body gradually adapts to electrostimulation so either more current is required after sustained stimulation or the electrodes should be moved to a fresh area. The wider the variety of stimulation, the slower the body adapts.

It's normal for sustained and/or intense stimulation to leave the area temporarily numb. Keep this in mind depending on what other activities you may have planned.

When using music for audio based stimulation, it is normal for quiet passages to produce little or no output—especially with orchestral music. Music with a more consistent volume or beat works best.

11 • AC / Battery Operation

The MK-312BT displays the amount of battery charge remaining when you first turn it on. **The battery level is only an estimate and will vary with different conditions.**

With the charge level above 70%, you can expect at least 6 - 8 hours of battery life remaining. If the battery level is below 30%, you should charge the battery as soon as possible. The battery is charged simply by connecting the AC adapter with the MK-312BT turned OFF.

Charging can take 6 hours or more and it's OK to leave the AC adapter connected for extended periods. The battery charging circuit automatically maintains proper battery health.

Unlike other e-stim power units, the MK-312BT stimulation intensity remains the same whether connected to the AC adapter or operated on battery power and does not grow weaker as the battery discharges. Run time depends on which modes are used and the output intensity. Higher intensities and frequencies will reduce the run time.

If you're not using one of the output channels, keep its output level turned down to maximize battery life.

The battery is rated for 1,000 or more cycles when properly cared for.

Running the battery dead or storing the MK-312BT with a low battery will greatly reduce the battery life. Frequent charging will extend its life.

If the unit is rarely used, fully charge the battery every 6 months or so.

12 • Caring For Your MK-312BT

The MK-312BT, like most electronic devices, should be treated with reasonable care. If one of the leads gets caught during use and causes the unit to fall, it could break and voids the warranty. Sometimes, the safest place for it is on the bed or on the floor.

In addition to lying flat, MK-312BT can stand upright on the back panel allowing the controls and front panel to face up.

Do not use the MK-312BT with or near high-voltage “violet wand” devices. The high voltages generated by these devices can damage many sensitive electronic devices.

Never connect the output channels together except as shown in 15 • Triphase Stimulation.

Do not use strong solvents to clean the unit. Keep liquids out of it. Don't use anything harsh on the front panel or it will scratch.

Lightly moistening a microfiber towel with 70% isopropyl alcohol is an easy way to clean the unit with common household materials.

Don't leave the MK-312BT in the sun. If the unit has been exposed to unusually hot or cold temperatures, let it adjust to room temperature before using it.

Do not attempt to modify or repair the MK-312BT yourself unless directed by ErosTek or Electrified Experiences. The unit requires special care when opening the case and handling certain components. You can easily damage the MK-312BT and you will void the warranty by attempting to open it.

- Note: If you carry your MK-312BT onto an airplane, be prepared to explain what it is, or refer to it as a piece of “audio test equipment”. The included foam-lined box is a perfect carrying case for these purposes.

13 • Advanced Topics: Menus

The MK-312BT is similar to a digital camera. Most users let their cameras or smartphones set the exposure and focus automatically and decide when to use the flash among other things. In a similar way, the MK-312BT makes automatic adjustments depending on the **Mode** and **MA** (MultiAdjust) settings.

Some users, however, may want more control. This section is intended for such users and is optional reading.

[MENU] Button

Pressing the [MENU] button enters the main menu. The **NEXT** [→] and the **PREVIOUS** [←] buttons now display various menu options and the [OK] button selects a displayed menu item.

To return to normal operation without making any changes, simply press the [MENU] button again.

Start Ramp Up?

Pressing [OK] will immediately reduce the intensity of both channels and slowly ramp it back up again. The amount of reduction and the ramp time are adjustable in the Advanced Adjustment Menu. The ramp time can be adjusted from less than one minute to more than an hour. The ramp level is displayed on the LCD.

Changing to another mode will cancel the ramp and return the MK-312BT to normal operation.

Note: The Ramp Up function does not work in the **Random1** mode.

This Ramp Up function offers some interesting options. It can be used to gradually increase the output over time to adjust for the normal desensitization that occurs during prolonged e-stim. Used this way, the perceived output level will remain approximately constant.

It can also be used to deliberately increase the intensity over time which some people find extremely pleasurable. It can challenge the user to complete the ramp cycle much like a weightlifter is challenged to complete a certain workout routine.

Set Split Mode?

Pressing OK allows you to select which two modes are used when Split is selected. For example, you might choose **Audio 1** for Channel A and Waves for Channel B or one of 80 other combinations. Simply select the mode for A, press **[OK]**, then select the mode for B and press **[OK]**.

- **Note:** Not all modes are available to Split as some require both channels to function correctly and certain combinations may not work as expected.

Set As Favorite?

Pressing **OK** will select the current mode as your favorite mode. This means next time you turn on your MK-312BT, it will automatically start in your favorite mode. The default is **Waves**.

Set Pwr Level?

Pressing **[OK]** brings up the Power Level menu. The MK-312BT offers three ranges of intensity—Low, Normal and High. The unit is set to Normal from the factory. If you're using the MK-312BT mainly for pleasure, or otherwise want to restrict the maximum output, the Low range is useful. If you're using it for BDSM or require more power, the High range can be selected. The new power level will go into effect immediately when **[OK]** is pressed.

- **CAUTION!** Turn down the Level controls before changing the Power Level. Use extra care when using the High setting. If already using High, and you want still more power, increase the Pulse Width setting. See: 14 • Advanced Adjustments.

More Options? Submenu

Pressing **[OK]** enters the **More Options** submenu. Pressing **[MENU]** returns to the main menu.

- **Random3 Mode?**

Selects a mode at random and starts a countdown timer which is displayed in the lower line of the LCD. A new mode is selected every time the timer reaches 0.

- **Random4 Mode?**

Selects a mode at random with alternating periods of ON time and OFF time. The periodic rest intervals can enhance the e-stim effects.

- **Debug Mode?**

Used for factory maintenance and testing.

- **Link Slave Unit?**

Pressing **[OK]** will attempt to link a second MK-312BT or ET-312B as a Slave [Controlled] Unit. See **5 • Connections**. For best results, select the MK-312BT as the **Controller** when linking to an ET-312B.

When linked, the Slave [Controlled] Unit will mirror the actions of the Controller. This provides 4 channels of stimulation coordinated by a single MK-312BT. The Output Level controls are used on the Slave [Controlled] Unit to adjust the intensity of the third and fourth channels.

Link works in most but not all modes. If you desire four channels of audio stimulation, use a headphone splitter / Y-cable or two microphones to feed the same audio source to both units.

- The following routines **will not work in Link Mode**:

- Audio 1 - 3 – Use audio splitter / Y-cable instead.
- Rhythm
- Phase 1 - 3

Enabling Link Mode:

1. Turn both units OFF.
2. Connect a **Link Cable** between the Link jacks on each unit.
3. Elect the **Controller**. An MK-312BT reliably controls an ET-312B.
4. Power both units ON.
5. On **Controller** Unit:
 1. Press **[Menu]** button 2 times.
 2. Press **PREVIOUS [←]** button 4 times.
 3. **More Options?** is displayed.
 4. Press **[OK]** button.
 5. Press **PREVIOUS [←]** button.
 6. **Link Slave Unit?** is displayed.
 7. Press **[OK]** button.
 8. **Linked!** is displayed.
 9. Use **NEXT [→]** and **PREVIOUS [←]** buttons to change mode.

If linking fails, an error is displayed and you must power both units OFF and back ON before you can try again.

Pressing [MENU] returns to the main menu.

Save Settings?

Pressing **[OK]** saves your choices for the Split mode, Power Level and the Advanced Menu values in nonvolatile memory. The MK-312BT will use these saved values in the future.

Reset Settings?

Pressing **[OK]** will reset the unit back to the factory default settings. If your MK-312BT isn't working the way it used to, this menu choice will set it back to the optimum factory settings.

14 • Advanced Adjustments Menu

If you are not familiar with concepts like pulse width, modulation and frequency, we do not recommend changing these settings. You can learn more about these settings in the following section.

From the main menu, press the **PREVIOUS** [←] button to reach **Adjust Advanced?** then press the **[OK]** button to enter the menus below.

These menus are intended for the advanced user looking to customize the sensations generated by the MK-312BT. These settings are optimized at the factory and do not need to be changed for most users.

Some modes dynamically adjust various parameters. For example, **Climb** is constantly changing the frequency. The **MultiAdjust** control is also often assigned to one or more parameters for each mode.

For these reasons, only some of the following adjustments will work in any given mode. These settings are all saved—even after the power is turned off — when the “**Save Settings**” function is executed from the main menu. Experiment to better understand the effects.

RampLevel Adjust?

This allows you to set the starting level for the Ramp function. The factory default is 70% and the range is 50% to 100%. Setting it at 50% means the output intensity will double from the beginning to the end of the ramp. This is more of an increase than many people are comfortable with. Setting it to 100% effectively disables the Ramp function.

RampTime Adjust?

This allows you to adjust the time (in seconds) between each ramp increment. The factory setting is 20 seconds. The range is 1 to 120 seconds per increment. With the factory settings, there are 30 steps between 70% and 100%. At 20 seconds per step, that's 600 seconds total time (10 minutes). If you set RampTime to 120 seconds, it would be 3600 seconds (1 hour).

- **Note:** You may not feel the output go up for each 1% increment depending on the mode and level settings. 1% can represent a very small change depending on the Mode.

Depth Adjust?

This adjusts the modulation depth of some of the modes. For example, on Stroke, it alters the range of the stroking effect. The factory setting is 50 and the range is 10 to 100.

Tempo Adjust?

This adjusts the intensity modulation speed and other rate parameters of some modes. The factory setting is 10 and the range is 1 to 100.

Freq. Adjust?

This adjusts the frequency of the pulses. Higher settings feel smoother and have more energy. The default is 150Hz.

Effect Adjust?

This adjusts the rate of various frequency effects. The factory setting is 5 and the range is 1 - 100.

Width Adjust?

This adjusts the pulse width. Pulse width affects the perceived intensity and “feel” of the stimulation. Wider pulse widths feel more intense and narrow pulse widths feel softer. The value indicates the width of each half of the bipolar pulse in microseconds. In general, use smaller values for pleasure e-stim and higher values for BDSM e-stim. See also “**Set Pwr Level?**” in [13 • Menus](#). The factory setting is 130 and the range is 70 - 250 microseconds.

- **Note:** Altering the factory pulse width will cause some modes (including some in **Random1**) to feel dramatically more intense than others. Extra care must then be used when changing modes.

Pace Adjust?

This adjusts the rate or interval of certain modes.

15 • TriPhase Stimulation

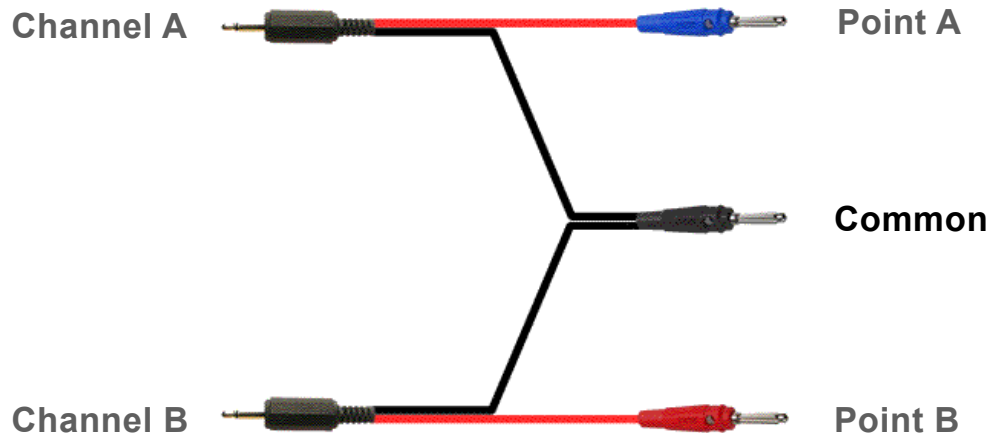
TriPhase is a novel feature of the MK-312BT. It creates three stimulation currents using only two channels.

It is important that the **Phase** and **Audio3** modes never be used above the waist. While the output channels are independent and electrically isolated from each other, a **TriPhase** configuration creates a common connection between the channels, making them no longer isolated.

This can cause unpredictable currents to flow across the chest depending on the electrode placement.

Audio 3 preserves the phase relationship between the left and right audio channels and works well with TriPhase configurations.

TriPhase most commonly utilizes 3 electrodes with one common connection between the two channels. An example of wiring is seen in the diagram below.



As seen above, the black wire of each channel is connected together to form a common connection.

Never connect both wires of a single output together.

You can purchase a [TriPhase Adapter Cable](#) from ErosTek to easily create a common connection using the supplied output lead wires.

The TriPhase Effect

Imagine a triangle of current flow when you place the 3 electrodes.

A typical example might be to attach the Common Electrode pad at the perineum or over the scrotum – using an E-Cup for example.

Electrode A might be placed further forward on the pelvis or on top of or along the penis shaft.

Electrode B could be an insertable electrode.

With this configuration, when using the **Phase** or **Audio 3** modes, three simultaneous currents will flow in the body.

- One current flows from Electrode A to the Common Electrode.
- A second current flows from Electrode B to the Common Electrode.
- The third current flows between Electrodes A and B.

The effect will vary dramatically depending on the source audio, electrode configuration and the setting of the **Level** and **MultiAdjust** controls.

Feel free to experiment—**but only below the waist!**

16 • Audio Modes

Microphone Options

The microphone signal is mixed in with the right channel Audio input. If a music player and the microphone are both connected, adjusting the volume on the music player and adjusting the MA control will allow the music stimulation to be balanced with sounds picked up by the microphone.

The MK-312BT mic input is designed for PC-compatible electret microphones.

Stereo Audio Processing

Some e-stim enthusiasts have created computer generated sound files for use with e-stim. These files are available on the Internet and can be played back using your choice of music player software. The MK-312BT is specially designed to process stereo audio files into a proper TENS-style e-stim waveform, opening up many new creative possibilities.

The **Audio 3** mode is designed to decode stereo audio files. **Audio 3** preserves phase information and can be used with in a TriPhase configuration.

Wired Remote Control

An external DC voltage, from 0 to 2 volts can be applied to the Remote jack, to allow proportional control of the outputs in the Audio 1 and Audio 2 modes. The **MA** control is used to set the adjustment range. A simple 1.5 volt battery circuit connected with Positive [+] to the Tip of the plug and Negative [-] to the Sleeve of a 3.5mm stereo plug will make a remote.

17 • Troubleshooting

The MK-312BT performs a self-test during power up and monitors various conditions during operation. The MK-312BT is designed to shut off the outputs and either reset itself or display an error message if a problem arises.

Low Battery Message

This normally means it's time to connect the AC Adapter and charge the battery. If you keep getting this message, leave the unit OFF to charge for several hours or overnight. This message can also indicate that the wrong AC adapter is being used or that the battery module is weak and needs to be replaced. MK-312BT Battery Modules can be purchased from ErosTek.

Failure Messages

If a failure message is displayed, the error codes below may indicate the likely problem:

- **04 Link Failure** - The slave MK-312BT did not respond correctly. Power OFF both units and try linking again.
- **15 User Mode Failure** - Invalid data was found in a User mode.
- **20 Calibration Error** – The MK-312BT is either too hot or too cold. Allow it to reach room temperature before powering ON.
- **21 Power Failure** - The wrong AC adapter usually causes this error code.

If any other code number is displayed, it may indicate a more serious problem with your MK-312BT. If you continue to receive a failure message, note the failure number and contact [ErosTek](#).

Other Problems

If your unit fails to operate properly, press and hold the **NEXT** [→] and **PREVIOUS** [←] buttons while turning the power ON and keep them held down until the self test completes. This will reset the unit to the factory settings. Having an audio source connected when using non-audio modes can cause some unusual variations.

It's normal for lead wires, adapters and accessories to fail after extended use. Replacing them can fix common problems quickly. Preventative maintenance is also encouraged.

USA Limited Warranty

Electrified Experiences products purchased by customers residing in the USA are warranted against manufacturing defects for **One Year** from the date of purchase from ErosTek. This warranty does not cover misuse, abuse, wear and tear, batteries or products which have been disassembled or tampered with.

There are no express warranties other than those listed here and no warranties whether express or implied, including, but not limited to, any implied warranties of merchantability or fitness for a particular purpose.

No other warranty of any kind, verbal or written, shall bind Electrified Experiences and their related companies, members, agents, employees, affiliates and consultants (collectively the "Manufacturer"). Further, the Manufacturer shall not be liable for direct, indirect, incidental or consequential damages caused by the use, misuse or inability to use the product regardless of the legal theory on which the claim is based. Without limiting the foregoing, Purchaser assumes all risk and liability for loss, damage or injury to Purchaser, others and property arising out of the use, misuse or inability to use the product.

Recovery of any kind against the Manufacturer shall not exceed the purchase price of the product. Any claim or dispute arising out of, or related to, use of Electrified Experiences products shall be submitted to an independent and objective arbitrator for binding arbitration. Binding arbitration shall be the sole remedy for any warranty dispute or claim and, by acceptance of the Use Agreement, the Purchaser expressly waives their right to file a lawsuit in any civil court seeking remedies from the Manufacturer except to enforce a legally binding arbitration decision.

Electrified Experiences authorizes ErosTek to repair or replace defective products at no charge as stipulated herein with new or reconditioned parts or products during the warranty period. Contact ErosTek for more information on obtaining warranty repair service.

A copy of the dated sales receipt is required for warranty repairs.

The customer is responsible for shipping costs and properly packing the unit. Warranty rights vary from state to state.

This Limited Warranty shall not extend to anyone other than the original purchaser, is nontransferable and states your exclusive remedy.

Authorized Sales and Support



ECForbes LLC

1443 Rock Spring Road, Ste 62

Bel Air, MD 21014 USA

Online Store: <https://erostek.com>

Email: sales@erostek.com

Technical Data

Model: MK-312BT

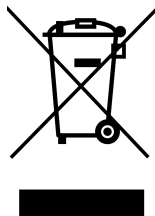
Mains Power: SELV Separated Extra Low Voltage
15 VDC / 30 W from Mean-Well Switching Power Supply GE-30I



Battery: AGM-Type, Non-Spillable 12 VDC / 2.3 AH lead-acid rechargeable

Note: Connected lead wires must be less than 3 meters (118") long.

Protection Level:



Version: 2024.0102.01